

# SB 3: Review and Future Prospects

Mary Kelly

Parula, LLC

November 2012, Texas Water Law, UT CLE



## **SB 3: Healthy Rivers and Bays for the Future**

At least that was the goal.

# SB 3 Findings and Goal

- 11.0235(d-2):
  - *The legislature finds that to provide certainty in water management and development and to provide adequate protection of the state's streams, rivers, and bays and estuaries, the state must have a process with specific timelines for prompt action to address environmental flow issues.*

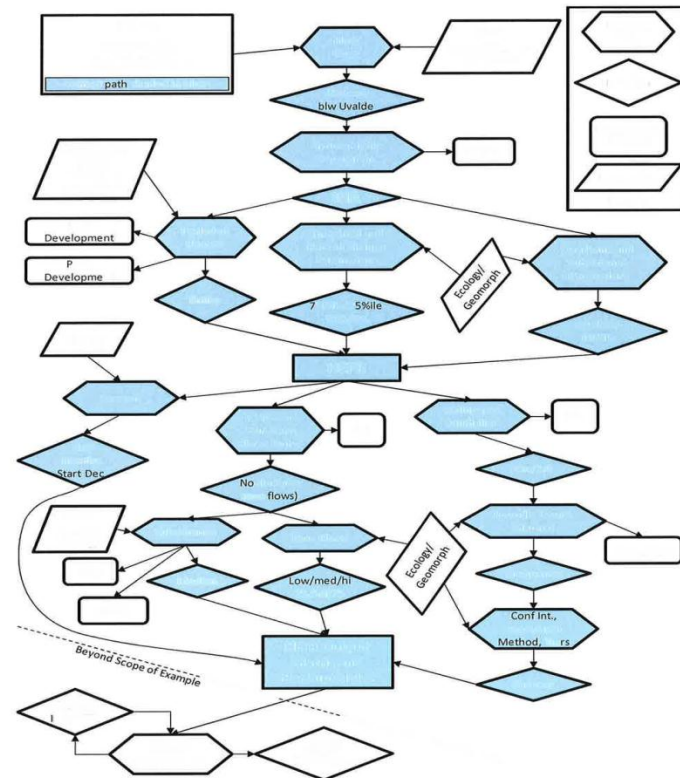
# Successes

- Importance of healthy flows gets attention at all levels
- Better understanding of values/needs of our rivers and bays
- Involving full range of science expertise
- Forum for trying to reach consensus about future flow needs
- CO basin



# Problems-1

- Data availability
- Science: flow need determinations still difficult; reliance on historical hydrology
- Demands on science and stakeholder groups
- Complexity of issues for stakeholders



# Problems-2

- First two basins lacked consensus at stakeholder level
- TCEQ rulemaking approach didn't encourage consensus in future basins
- Funding for work plan implementation not secured





**But, not the end of the road.**

Or at least it doesn't have to be.

# Worth it?

- Economic and natural heritage values of healthy rivers and bays are as important as ever, if not more.
  - \$\$\$
  - *ESA and project specific fights still loom large if we dry up flows*
- Have developed substantial information on needs of rivers and bays, and identified the gaps that need to be filled.
- Tools and process to integrate quantified flow needs with water planning (surface and groundwater) for a true “state water plan.”
- Some groups have identified voluntary strategies that could provide good examples for future.





**What do we need to go forward?**

And can we get it?

# Moving Forward

- Recommitment of leadership support
- Funding for work plan and voluntary strategy implementation
- Integration with the SB 1 process—  
informal/formal?  
(WAM and data limitations?)

